

The Blakedown Mobile Welfare Unit - Features

Lightweight - For an Easy Move

Our B400 unit offers the affordable cost effective solution. Its light weight construction avoids expensive delivery costs, and coordination of hire cranes and staff.



Our unit is not a cumbersome, heavy steel security unit. We have gone to great effort to ensure this unit weighs in at less than 1.2 tonnes.

- Easily deployed, towed behind a small/medium car or van.
- Avoids expensive and logistically difficult deliveries required with heavy units.
- Lightweight but robust construction reduces fuel bills as well.

Tough and Strong



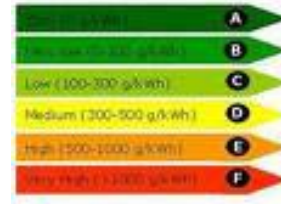
The construction is very durable; the internal and external faces are full depth

colour and UV stable and this resists the scratches and damage incurred during use in the most rugged environments ensuring the unit will look good for years to come.



The composite construction set on a galvanised steel chassis is remarkably strong whilst keeping weight to a minimum.

Energy Efficient



- The light weight of this unit reduces fuel bills during transport.
- The thermally efficient wall and roof construction minimise heat loss in winter and keeps the unit cool in the summer.
- Low energy LED lighting and LPG blown air heating allow the unit to run for up to two weeks between battery charging.



The Blakedown Mobile Welfare Unit - Features

Easy Compliance with Welfare Regulations

The Workplace (Health Safety and Welfare) Regulations 1992 and CDM Regulations 2007 place obligation upon employers to make suitable welfare arrangements for their employees.

This can be difficult or costly to achieve for short term deployments.



The unit provides shelter, light, WC, washing facilities with hot water, drying room, and mess area with space heating, and facilities to heat food and first aid provision. (optional).



The unit provides LCD lighting and the management system for LPG blown air heating and hot water system. Food and drink can be heated using the LPG twin hob.



The Blakedown Mobile Welfare Unit - Features

3 Toilet Options

We offer 3 toilet options:



The entry level option is a rotational moulded polypropylene chemical toilet, fitted with a secure transport cover to enable transport whilst full. This unit would typically be maintained on a weekly basis by any portaloos rental provider.



A no cost option is to use a recycling pump polypropylene unit, this recycles the toilet chemical during use, however it is recommended the unit is emptied prior to transport.



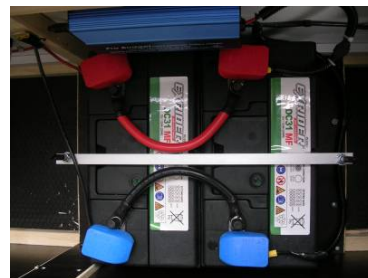
The optional high level variant is a Thetford cassette based system, with powered fresh water flush. The effluent is stored in a removable cassette for easy discharge by the operator into any toilet or disposal point. The unit is safe for use with septic tanks.

Power Options

The B400 comes with two power options.

240 volt for connection to mains or an independent generator. Operating through a double pole, fused RCD/MCB this unit offers efficient fluorescent lighting, convector heating and power sockets for microwave / kettle / laptop etc....

12 volt independent turnkey operation is provided by a bank of deep cycle batteries.



The Blakedown Mobile Welfare Unit - Features

Security Features

This unit is not a cumbersome heavy security unit; however it is surprisingly secure from the strong composite walls to the tamper proof door extrusions and window shutters. This unit is a tough performer.



The lightweight tow-ability enables it to be easily moved from high risk sites for safe storage.

Unlimited Flexibility

Whilst we have two standard options and because we do not stock preformed wall sections, we can offer unlimited variations for door, window and partition configuration.

We have an extensive range of standard colour options and your specific colours can be achieved if required as an option.

We would be pleased to arrange sign writing and bespoke other customer options to your requirement.



After Sales Services

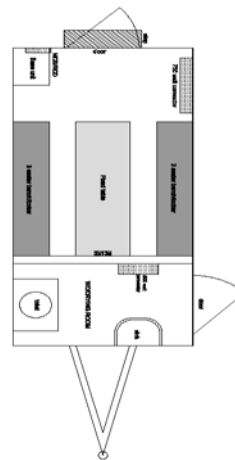


Our after sales team would be pleased to coordinate the supply and fitting of spares and upgrades as required.

The chassis uses quality Alko components and spares are readily available.

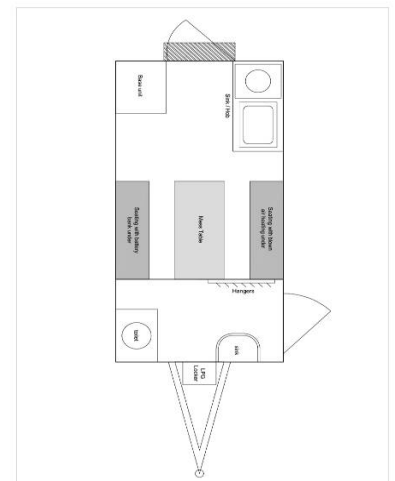


Layout Examples



**Example 1 –
240 volt Option**

- Seating/table for 6 persons
- Convector heating
- WC/washing/drying area



**Example 2 -
12 volt/LPG Option**

- Seating/table for 4/6 persons,
- Blown air heating
- Sink/twin hob
- WC/washing/drying area